

189G/T · 1,200PS
Work / Survey vessel

KAIKO MARU No.8



OOC

Main Details

Year Built	May 1997	Length	40.50m	- O. A.
Class	JG		32.93m	- P. P.
Official No.	135050	Breadth	7.60m	
Call sign	JIVH	Depth	3.20m	
Service of Ship	Survey and Work boat	Draught	2.90m	
Navigation Area	Greater Coasting Area A2 Navtex Area Only	Tonnage	189t	- gross tonnage
		Complement	37 persons	(Crew 15, Other Persons 22)

Engine and Propulsion

Main Engine	1,200PS × 900rpm Daihatsu 6DLM-22FSL × 1	Speed	13.48kt - maximum 11.5kts - at cruise
Propulsion	CPR × 1	Bow Thruster	CPP type 13.72kN (1.4t) × 1
Generator	Main Generator 180kVA × 2	Stern Thruster	CPP type 13.72kN (1.4t) × 1

Navigation, Radio Equipment and Communication

Joy stick control	GMDSS (A1, A2 Area)
Auto Pilot GPS DGPS Magnet Compass	VHF Radiotelephone 2-way Radiotelephone
Gyro Compass	EPIRB SART NAVTEX Rader
Scientific Echo Sounder (FURUNO FCV-780)	Maritime Telephone / Fax 090-3023-3553 / 03-6888-5432
Acoustic Doppler Current Profiler (FURUNO CI-20-H)	E-mail kaiko8@oocltd.jp

Deck Equipment

Deck Crane × 1	8.0kN (0.8t) Slewing Radius ~10.67m	Mooring Equipment	Stockless type Bow Anchor 370kg × 2 Stock type Anchor 115kg × 1 Chain φ22mm×150m × 2 Windlass - 19.6kN (2t)
Capstan × 1	14.7kN (1.5t) - 13m/min		
Winch × 1	29.4kN (3t) - 100m/min		
Tugger Winch × 2	29.4kN (3t) - 30m/min		
Electric Winch × 2	4.4kN (0.45t) - 30m/min		

Tank and Deck Capacity

Fuel Tank	91.66m ³	Free Deck Space	91.5m ² (12.2m×7.5m)
Fresh Water Tank	20.80m ³		

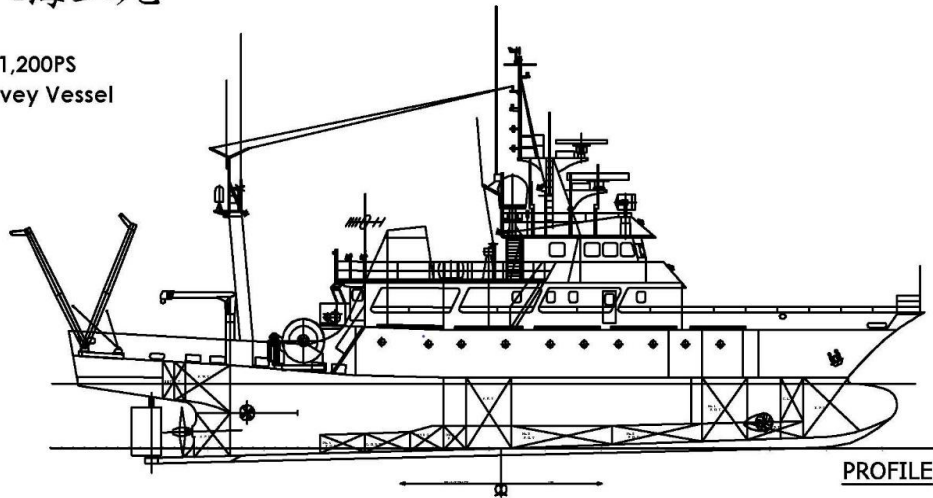
Others

Dedicated Work Space 2 rooms (1.2m×2.8m / 1.9m×1.7m)



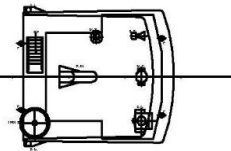
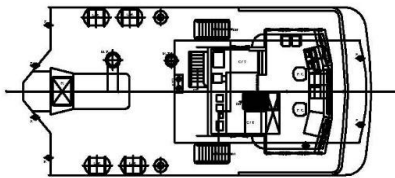
KAIKO MARU No.8
/ 第八海工丸

189G/T - 1,200PS
Work / Survey Vessel

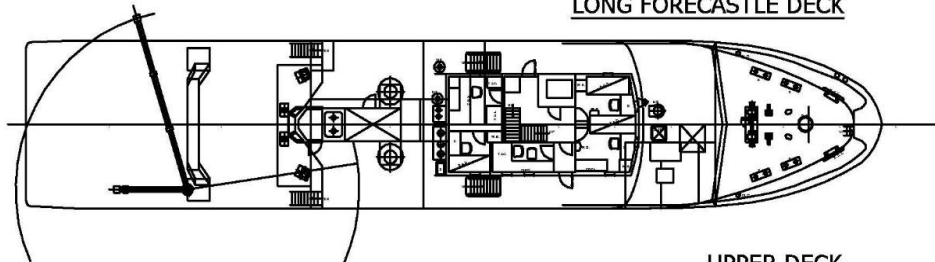


NAVIGATION BRIDGE DECK

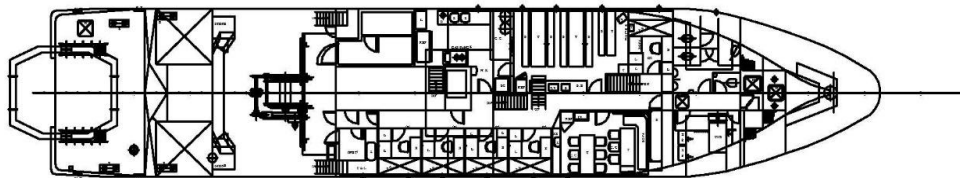
COMPASS DECK



LONG FORECASTLE DECK



UPPER DECK



TWEEN DECK

