

699G/T • 3,236KW  
Offshore multi-purpose  
work vessel

**KAIYO**



**OOC**

## Main Details

<b>Year Built</b>	July 2013	<b>Length</b>	56.0m	- O. A.
<b>Class</b>	NK		46.80m	- P. P.
<b>Official No.</b>	141963	<b>Breadth</b>	12.0m	
<b>IMO No.</b>	9697911	<b>Depth</b>	5.00m	
<b>Call sign</b>	7JPM	<b>Draught</b>	4.30m	
<b>Service of Ship</b>	Tug and Work Boat	<b>Tonnage</b>	699t	- gross tonnage
<b>Navigation Area</b>	Coasting Area A2		999t	- international tonnage
		<b>Complement</b>	30 persons (Crew 13 Other Persons 17)	

## Engine and Propulsion

<b>Main Engine</b>	3,236KW Niigata 6L28HX 1,618kW(2,150PS) ×2	<b>Bollard Pull</b>	542kN (55.3t)
<b>Propulsion</b>	Azimuth thruster (CPP) ×2	<b>Speed</b>	14.3kts - maximum 12.0kts - at cruise
<b>Generator</b>	Shaft Generator 950kVA Main Generator 300kVA ×2	<b>Bow Thruster</b>	CPP type 78.5kN (8.0t)

## Navigation, Radio Equipment and Communication

DPS (Kongsberg K-Pos) Auto Pilot	GMDSS (A1, A2, A3)
Magnet Compass Gyro Compass(TG-8000)	VHF Radiotelephone×2 2-way Radiotelephone×2
DGPS(JRC JLR-7800)	MF/HF Radiotelephone (DSC, NBDP) Inmarsat C(JRC JUE-85)
Echo Sounder (JRC JFE-380, SIMRAD EA600)	EPIRB SART×2 NAVTEX AIS Rader(JRC JMA-5322-7)×2
Doppler Current Meter (JRC JLN-628)	Maritime Telephone / Fax 090-3023-0989 / 03-6888-5167
Maritime Telephone (Inmarsat FBB SAILOR150)	E-mail kaiyo@oocltd.jp

## Deck Equipment

<b>Anchor Handling &amp; Towing Winch</b>	392kN (40t) - 3.2m/min 196kN (20t) - 7m/min 98kN (10t) - 14m/min 1,078kN (110t) - Brake	<b>Stern Roller</b>	3.40m×1.4m dia SWL 980kN (100t)
<b>Tugger Winch ×2</b>	49kN (5t) - 11m/min 24.5kN(2.5t) - 22m/min 73.5kN(7.5t) - Brake	<b>Deck Crane</b>	960kg (0.9t) Slewing Radius - 360° - 13m Maximum Hoisting Lift - 42m
<b>Capstan ×2</b>	49kN (5t) - 11m/min 24.5kN(2.5t) - 22m/min 49kN (5t) - Brake	<b>Mooring Equipment</b>	AC-14 type Anchor 890kg ×2 Stud Link Chain φ30mm×300m ×2 Windlass Chain Drum - 68.6kN(7t) Hawser Drum - 49kN(5t)

## Tank and Deck Capacity

<b>Fuel Tank</b>	544m3	<b>Free Deck Space</b>	280m2 (28m×10m)
<b>Fresh Water Tank</b>	339m3	<b>Deck Cargo</b>	258t
<b>Bulk Tank</b>	100m3 (25m3×4)		

## Others

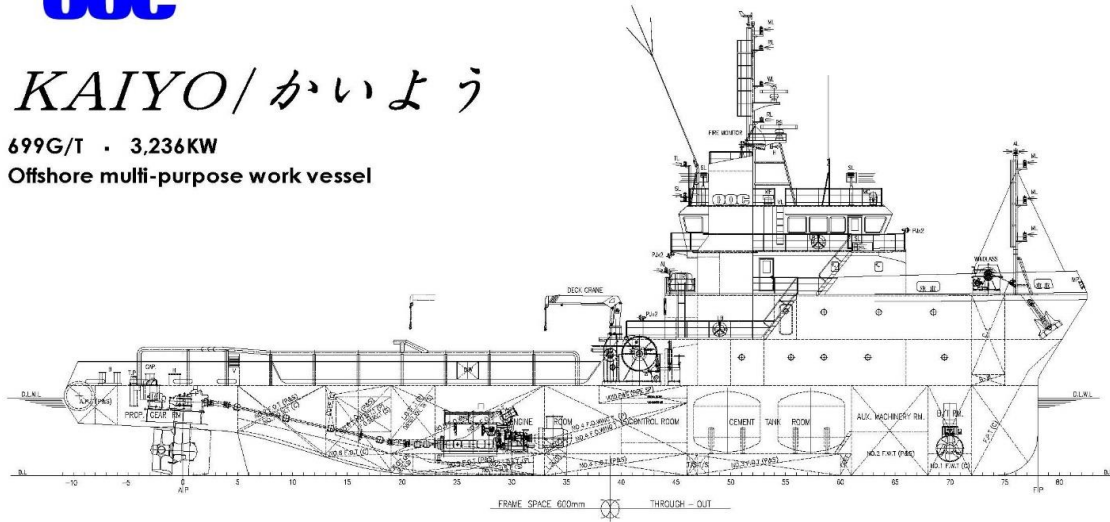
Toing Pin •Fork Pin 350φ x 2、Fork 350φ x 2

**OOC**

# KAIYO / かいよう

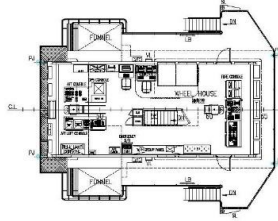
699G/T · 3,236KW

Offshore multi-purpose work vessel

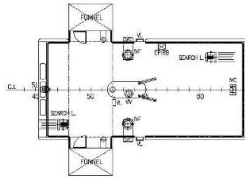


"D"-DECK PLAN  
"C"-DECK PLAN  
"B"-DECK PLAN  
"A"-DECK PLAN  
MAIN DECK PLAN

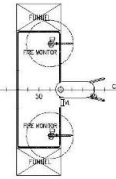
"C"-DECK PLAN



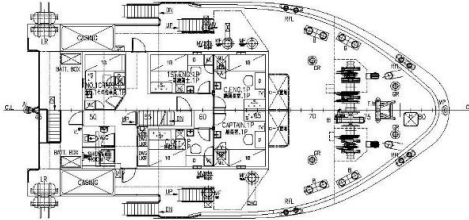
"D"-DECK PLAN



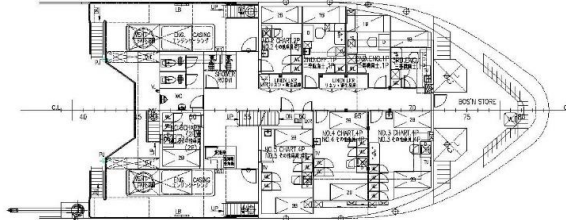
MONITOR STAGE PLAN



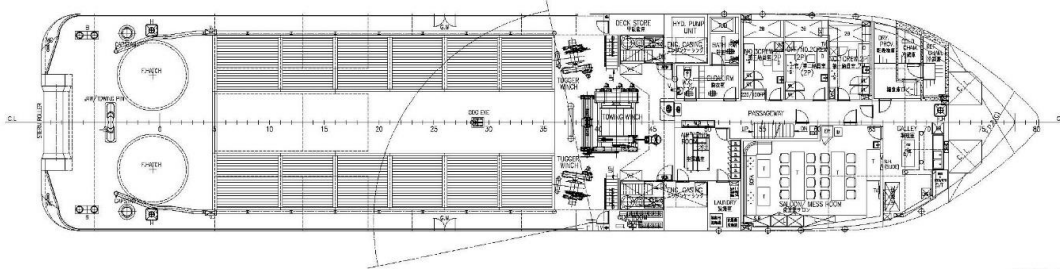
"B"-DECK PLAN



"A"-DECK PLAN



MAIN DECK PLAN



TANK TOP PLAN

